



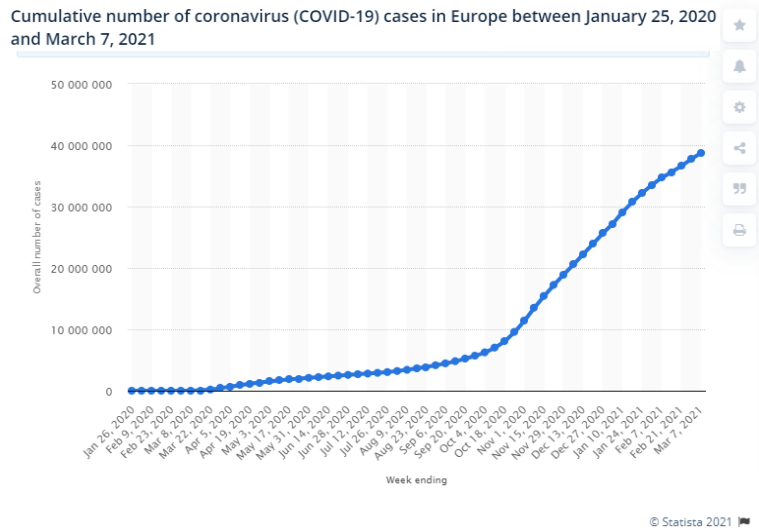
Enterprise Protection System

Safeguarding people & operations in production and logistic environments

T · Systems · Let's power higher performance



Corona continues to be a threat to our private and business lives Damages can be significant – reactivation is a serious effort



New coronavirus variants could cause more reinfections, require updated vaccines

By Kai Kupferschmidt | Jan. 15, 2021, 4:55 PM

NEWS FEATURE · 16 FEBRUARY 2021

The coronavirus is here to stay – here's what that means

A *Nature* survey shows many scientists expect the virus that causes COVID-19 to become endemic, but it could pose less danger over time.

22 MAY 2020 Last Updated at 2:59 PM | SOURCE: F11

600 staffers of slaughterhouse in Netherlands quarantined over coronavirus fears



The Hague (Netherlands), May 22 (AP) The owner of an abattoir in the eastern Netherlands says that health authorities have placed all 600 staff in home quarantine for two weeks after 45 workers tested positive for the coronavirus.

The meatworks is in Groenlo, close to the Dutch border with Germany. Authorities in Germany agreed this week to crack down on

Airbus forced to quarantine 500 staff in Hamburg after COVID-19 outbreak

January 25, 2021



Airbus has been forced to quarantine 500 of its 12,000-strong workforce at its Hamburg-Finkenwerder,

infections. Vion is an international

The more contagious coronavirus variant may soon be the U.S.'s dominant strain

More rigorous efforts to vaccinate, wear masks and social distance are needed to curb its spread, CDC says

Covid crisis far from over; 3rd wave to be more dangerous:

Netherlands joins Ireland in vaccine suspension over blood clot concerns

BioNTech admits it will struggle to fill COVID vaccine 'gap'

The co-founder of the German vaccine developer has spoken of the battle to ramp up production of its coronavirus jab. His comments come amid growing criticism of Europe's vaccine rollout.

Avoiding local lockdowns requires solutions fitting the conditions

The Enterprise Protection System (EPS) delivers on this

The collage includes several news snippets and images:

- Cumulative number of coronavirus (COVID-19) cases in Europe between January 21, 2020 and March 7, 2021**: A line graph showing a sharp increase in cases starting in early 2021.
- New coronavirus variants could cause more reinfections, require updated vaccines**: A headline with a sub-headline "The coronavirus is here to stay – here's what that means".
- 400 staffers of slaughterhouse in Netherlands quarantined over coronavirus fears**: A headline with a sub-headline "The more contagious coronavirus variant may soon be the U.S.'s dominant strain".
- Netherlands joins Ireland in vaccine suspension over blood clot concerns**: A headline with a sub-headline "BioNTech admits it will struggle to fill COVID vaccine 'gap'".
- Covid crisis far from over; 3rd wave to be more dangerous:** A headline.
- Images**: A large industrial factory interior, a yellow car on a production line, a large cruise ship docked at a pier, a robotic arm in a factory, and a person cheering at a stadium.

- Production type environments have constraints regarding usage of Bluetooth devices (interference with production technologies)
- Sometimes smartphones are not even allowed or reliable
- Metal heavy environments limit Bluetooth based tracing technologies
- Many people inside buildings partly close to each other

→ The Enterprise Protection Systems complies with these requirements



The Enterprise Protection System (EPS)

GDPR compliant exposure management for production environments


Learnings & Limits of the official Corona-Warn-App (CWA)



- Adoption (25+ million downloads) requires trust requires transparency
- Tracing cuts infection chains
- 5 important core principles: Simplicity, data minimization, use of standard technology (Bluetooth Low Energy, BLE) for contact tracing, security and open source
- Production / logistics environments limit the applicability of the public CWA
- A solution needs to keep the core principle while it addresses the additional requirements

The Enterprise Protection System (EPS)

- Combining the principles and execution of the Corona-Warn-App with a wearable based on Ultra-Wideband to efficiently trace infections chains
- Specific Enterprise App keeping the personal, local enterprise contacts and tracing tickets
- High precise distance tracing with robust wearables coupled to the app and visual / acoustical social distance alerts
- Automated, decentral data management through Edge Cloud connectivity
- Easy to use and fully managed

 The Enterprise Protection System (EPS) combines state-of-the-art technologies with data privacy fulfilling the needs of business users. The App is developed agile in co-innovation with customers.

Enterprise Protection System Use Journey

1 Start of shift
Check In

2 During the shift
Trace & Collect

3 End of shift
Check Out

4 Positive test
Verification

5 Critical contact
Mitigate risks

6 Dashboard
Contact tracing

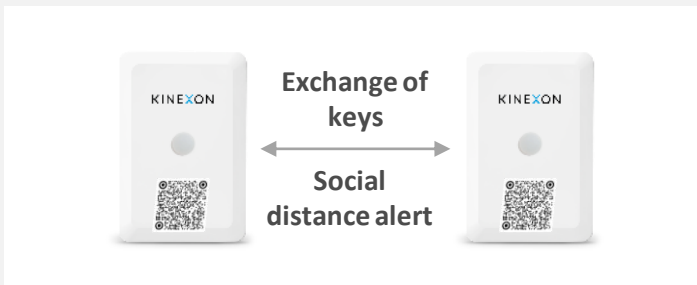
The Enterprise Protection System user journey focuses on simplicity, robustness and data sovereignty without central data storage

1 Beginning of shift Check In



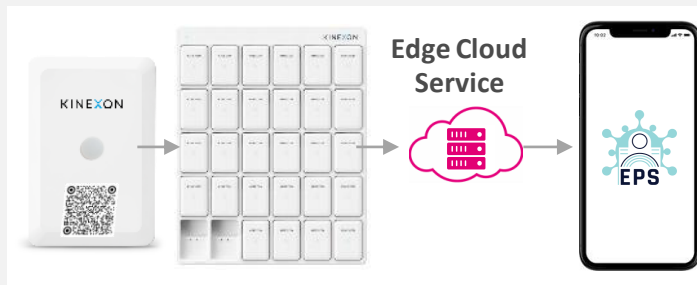
- Connect & Pair personal Enterprise Protection System App with a KINEXON SafeTag.
- Any SafeTag can be taken.
- QR Code based – scanning by app
- KINEXON SafeTag charging station.

2 During the shift Trace & Collect



- “My” SafeTag is carried during shift in production – cell phone is left behind in locker room.
- Exchange of keys with devices around
- Acoustic / visual social distance alerts to avoid critical contacts.

3 End of shift Check Out



- End of shift device is plugged into station
- Automatic check out / data unloading is triggered.
- Tracing data from KINEXON SafeTag happens via an Edge Cloud service to the paired individual Enterprise Protection System App with no central storage of data.

The KINEXON SafeTag

Intelligent Wearable to ensure the minimum distance



With the SafeTag, KINEXON offers a unique UWB sensor that is proven and immediately available:

- Highest measuring precision (<10 cm)
- Measurement of the intensity of the encounter (time)
- Maximum data protection
- Flexible use and fast scaling - without any infrastructure

Significant reduction of contact-intensive encounters

Flexibly adaptable to individual customer needs

Start of work



The employee takes the KINEXON SafeTag from the Charging Pad at the start of work. The sensor is now activated and ready for use.

Distance measuring



The distance between the sensors is measured in real time. If colleagues are nearby, but at a non-critical distance (> 1.5 m), the sensor LED flashes green.

Visual warning signal



As soon as the minimum distance of 1.5 m is fallen below, the sensor LED flashes in a warning red. An acoustic signal does not yet sound if the contact time is less than 5 seconds.

Acoustic warning signal



If the distance falls below the minimum distance of 1.5 m for more than 5 seconds, an acoustic warning signal sounds at all sensors in addition to the red flashing.

Enterprise-grade verification of positive test results and notification of critical contacts supports effective countermeasures

4

Positive test result

Verification

Positive test result



Positive IDs



Optional for employees: Provide contact data

- Infection reporting process with verification by e.g. HR department, Corona Task Force (e.g. TAN generation and SMS distribution to employee).
- Optional reporting of individual contact data by infected employee to employer.

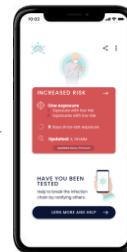
5

Critical contact

Immediate information



Positive IDs



Optional for employees: Provide contact data



- Positive IDs are pushed to the individual EPS App and risk status is shown incl. behavior guidelines.
- Optional reporting of individual contact data by critical contacts to employer.

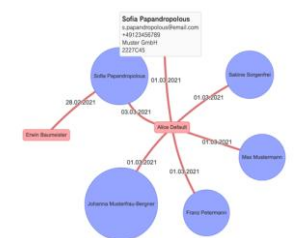
6

Company dashboard

Contact tracing



Diese Grafik visualisiert die Risikobewertungen der Nutzer des Systems. Bitte beachten: es gibt keine Anzeigefunktion für die Risikobewertungen der jeweiligen Risikobewertungen. Benutzen Sie die Maus über einen Benutzer um detaillierte Informationen zu erhalten.



- Analytics and dashboard for customers on infections status, no. of critical contacts.
- If employee opts-in for providing contact data, the data is accessible for the employer

Reliable state of the art hardware



EPS Plug and Play

Easy to install, easy to use = easy to keep employees safe



EPS makes events possible

Successful Pilot with DEL



Wieder Fans beim Eishockey? Grizzlys Wolfsburg testen App-Lösung

Jürgen Braun
Wolfsburger Allgemeine / Allen-Zentrum
05.03.2021 / 19:18 Uhr



Warm-App im Test: Die Grizzlys Wolfsburg machen mit. Es soll ein Baustein bei der Rückkehr von Fans sein. © Bernd Benschken/Jakob Schneider

Es geht um die Rückkehr der Fans. Das Eishockey-Oberhaus testet eine Corona-App - auch bei den Grizzlys Wolfsburg. Das steckt dahinter.



Pricing models

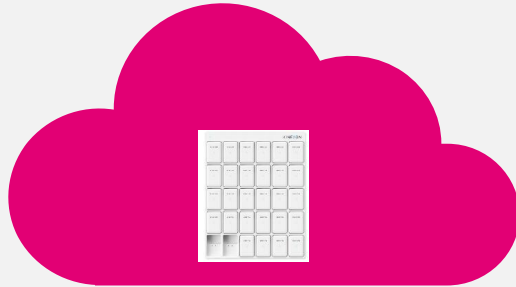
Various package sizes for different needs

S package

Hardware

- 30 SafeTags
- 1 Charging Pad
- 1 Edge Device

- Incl. Service & Support
- Incl. unlimited licenses



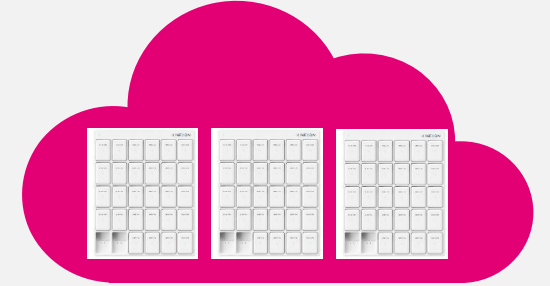
24,90 EUR per SafeTag / month*

L package

Hardware

- 90 SafeTags
- 3 Charging Pad
- 1 Edge Device

- Incl. Service & Support
- Incl. unlimited licenses

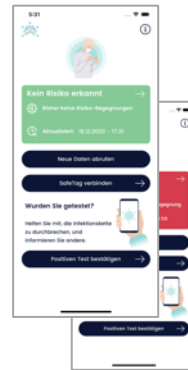


19,90 EUR per SafeTag / month*

* Package price per month (12 months minimum term)

The advantages

- ✓ Reduction of the infection risk through the distance warning system
- ✓ Rapid interruption of infection chains through contact tracing
- ✓ Highest data privacy increases acceptance
- ✓ Plug & Play solution allows easy and quick deployment



Protects health!
Makes events safe!
Relieves the health authorities!

Let's get in touch

Oliver Queck

T-Systems International
Sales and Pre-Sales Digital
Enabler



Oliver.Queck@t-systems.com | +49 151 – 1682 4663

Michael Witstock

T-Systems International
Digital Enabler



Michael.Witstock@t-systems.com | +49 160 – 9018 7949